

HF10 Coupe-feu

HF10 Fire-rated / HF 10 Brandschutz

HOYEZ
Cloisons amovibles
Relocatable partitions
Versetzbare Trennwände

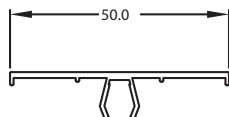
PROFILS DE BASE & ACCESSOIRES

Basic profiles & Accessories / Basisprofil & Zubehör

F050

■ Couvre-joint

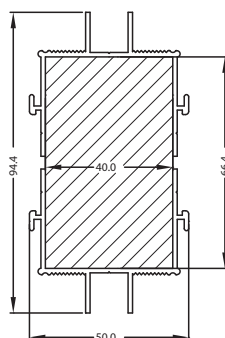
Cover-trim / Fugenabdeckung



FMB

■ Montant ou traverse

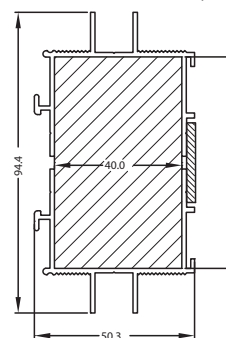
Transom or post
Traverse oder Pfosten



FLIDEB

■ Lisse Haute ou Départ

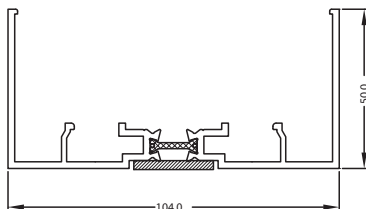
Upper profile or wall connection
profile / DeckenanschlusBprofil oder
WandanschlusBprofil



FLIBAS

■ Lisse basse

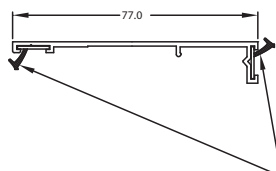
Lower U-Track / Bodenprofil



F075

■ Intercalaire double vitrage

Double glazing cap
Abdeckprofil für Doppelverglasung

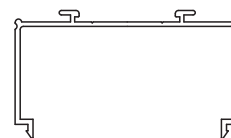


H5 J02 Joint de vitrage
Glazing joint
Dichtung für die Verglasung

FSUPB

■ Support capot vitrage

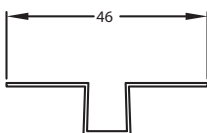
Fastener for glazing cap / Zubehörteil
für Doppelverglasungsprofil



FOME

■ Oméga acier

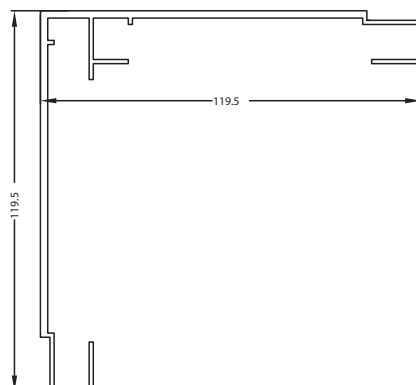
Steel omega
Omega-Profil aus Stahl



F120

■ Profil 2D

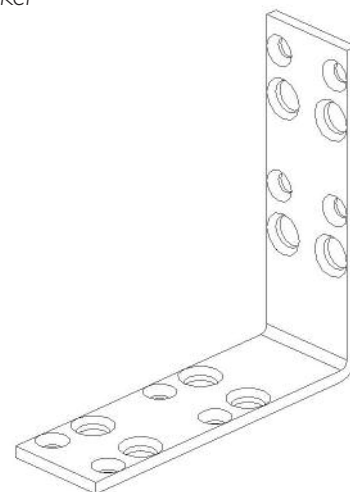
90° angle
90° Winkel



L85P

■ Equerre acier

Bracket
Winkel



HF10 Coupe-feu

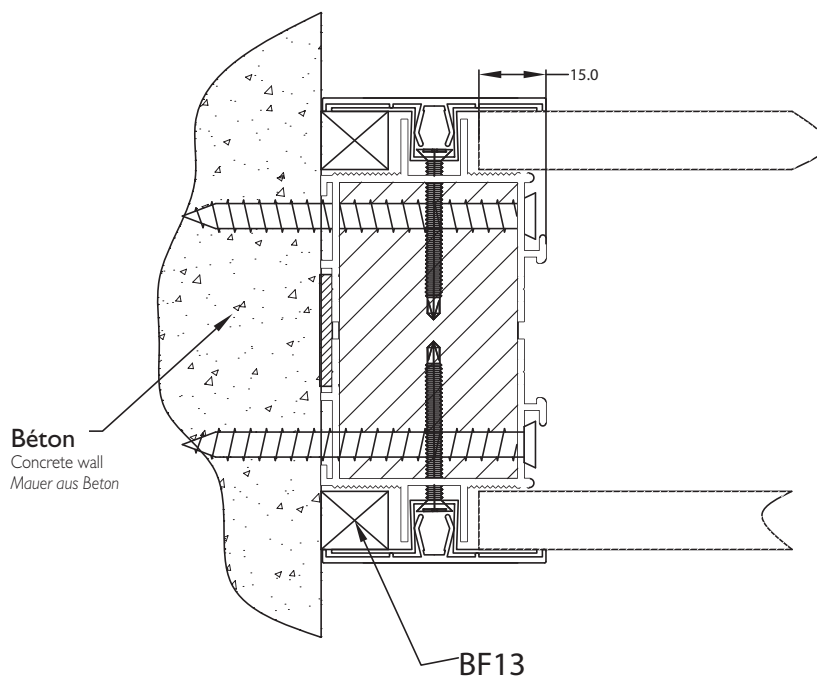
HF10 Fire-rated / HF 10 Brandschutz

PRINCIPES D'ASSEMBLAGE

Assembly principles / Montageprinzip

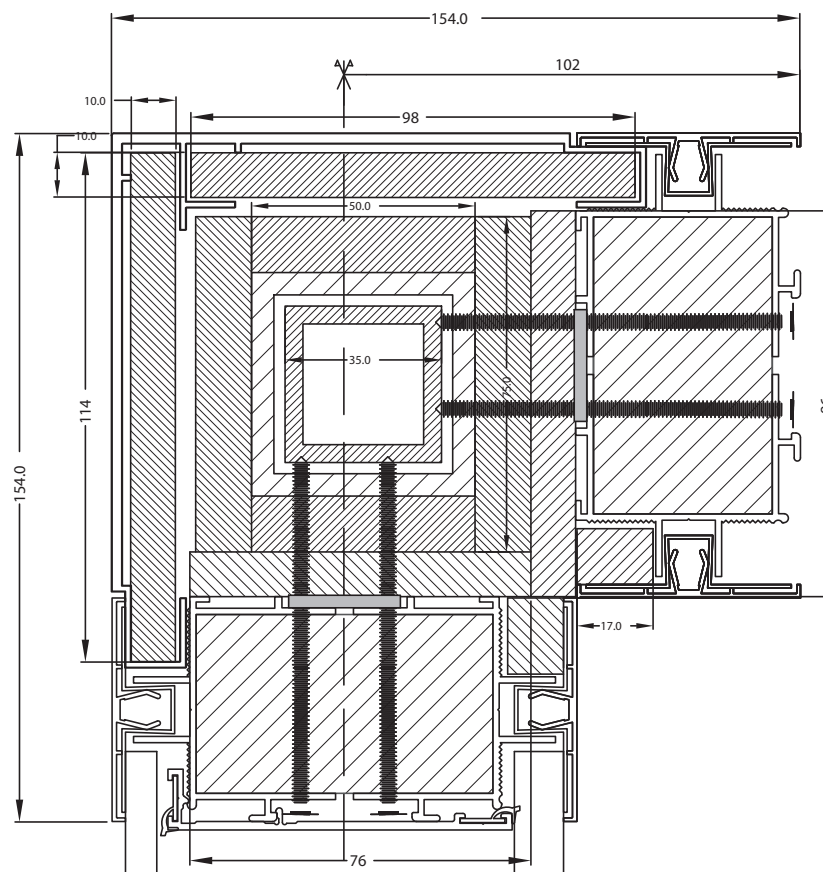
■ Départ mur

Wall connection profile
Wandanschluss



■ Angle 2D 90°

2D 90° angle
Winkelprofil 2 Abgänge 90°



HF10 Coupe-feu

HF10 Fire-rated / HF 10 Brandschutz

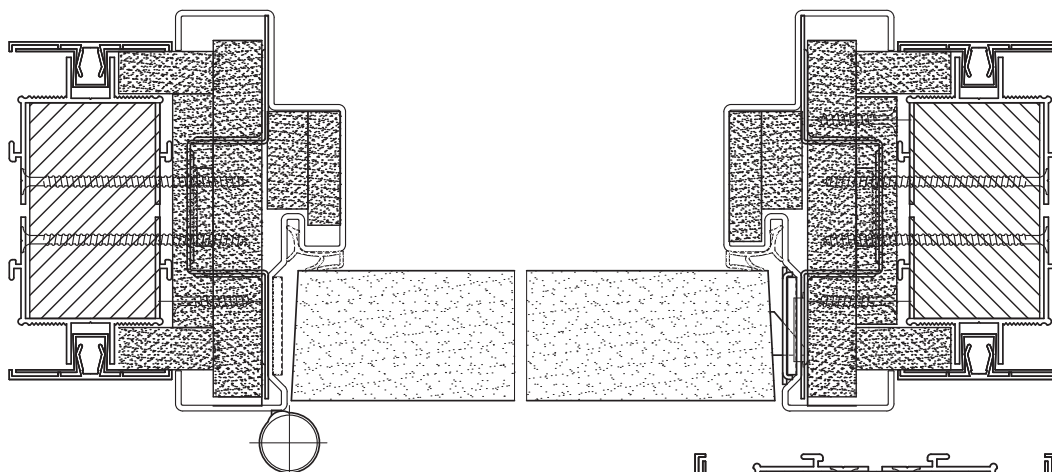
HOYEZ
Cloisons amovibles
Relocatable partitions
Versetzbare Trennwände

PRINCIPES D'ASSEMBLAGE

Assembly principles / Montageprinzip

■ Coupe horizontale : Bâti acier et sa porte coupe-feu

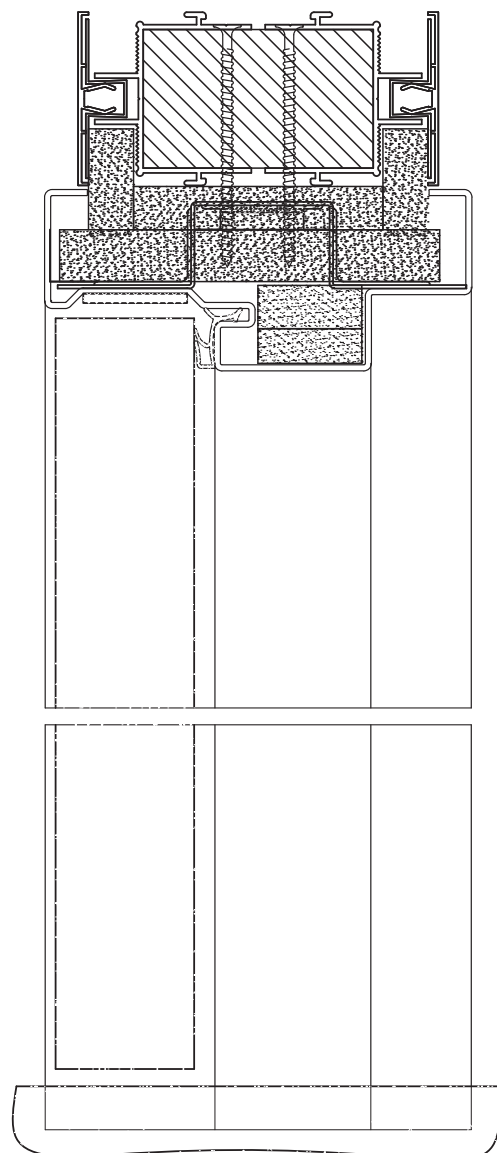
Longitudinal section : steel doorcase and its fire-rated door / Waagerechte Schnitt : Stahltürzarge und Brandschutztür



■ Coupe verticale : Bâti acier et sa porte coupe-feu

Cross-section : Steel doorcase and its fire-rated door

Senkrechter Schnitt : Stahltürzarge und Brandschutztür



HF10 Coupe-feu

HF10 Fire-rated / HF 10 Brandschutz

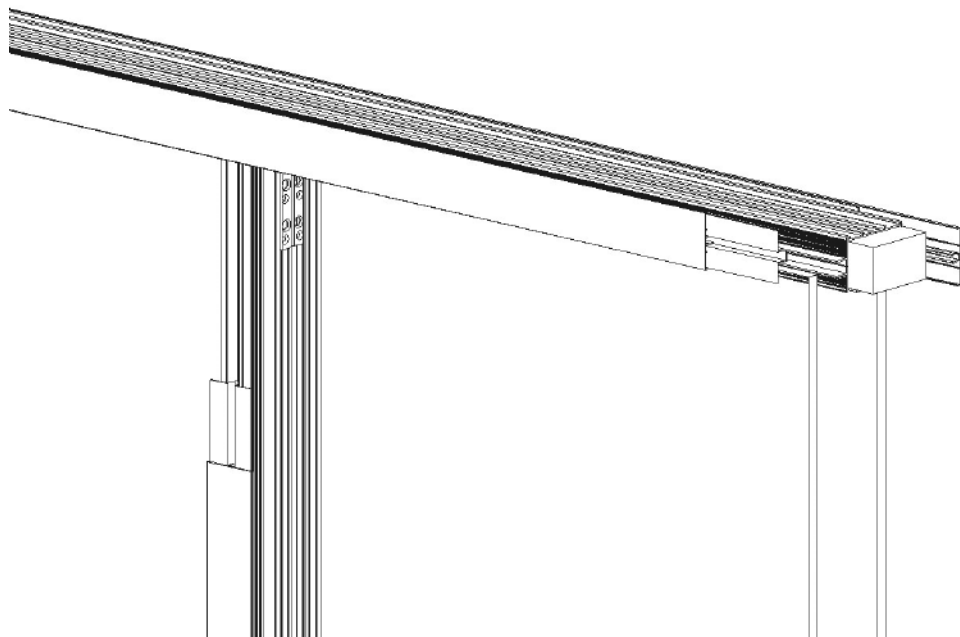
PRINCIPES D'ASSEMBLAGE

Assembly principles / Montageprinzip

■ Détail de montage de la tête de cloison feu

HF10 ceiling connection assembly details

HF10 Deckenanschluss Montageprinzip



■ Détail de montage de la tête de cloison feu avec retombée placo

Assembly details : connection to a metal stud partition

Montageprinzip für Deckenanschluss mit Gipskartonverlängerung

